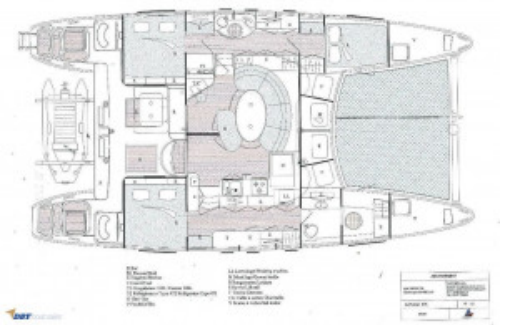




Catana 471 Owners version

Sold



Specifications

Boat Details

Price	Sold	Boat Brand	Catana
Model	471	Length	14.33
Year	2000	Category	Multihulls
Hull Style	Multi	Hull Type	GRP
Power Type	Sail	Stock Number	MHCA473250
Condition	Used	State	New Zealand
Suburb	New Zealand	Engine Make	VolvoPenta

Disclaimer

Our company offers the details of this vessel in good faith but cannot guarantee or warrant the accuracy of this information nor warrant the condition of the vessel. A buyer should instruct his agents and/or surveyors to investigate such details buyer desires validated. This vessel is offered subject to prior sale, price change or withdrawal without notice.

Description

A good-looking, well-made, sturdy and comfortable performance catamaran with excellent long-distance performance, whatever the wind angle. Helming positions at the extremities of the boat give unbeatable views of the sails and you can see all corners of the boat from either position.

Aroha's husband and wife owners have recently completed a two year cruise from Europe to New Zealand. Her large cockpit has a great flow into the main saloon that can seat around 8 people with a sizable galley with a 400lt fridge to starboard and nav station off to port. A Fusion state of the art sound system will keep you in the mood while relaxing on board.

Being the much more desirable "Owners Version" featuring 3 cabins, the port hull has 2 double cabins, a separate toilet and shower, an extra deep freeze and a washing machine. The aft cabin also has a spare bed turning it into a 3-berth cabin.

Stepping into the starboard hull you will find an apartment-sized cabin that is dedicated to the owner. Aft is a large double bed with a TV set, forward is a separate large walk-in thermo controlled shower and toilet with a writing desk, library and storage, midships. A truly great living space.

Most sailing systems have redundancies such as 2 chart plotters, 2 autopilots 2 AIS and 2 sets of sailing instruments. 8 winches, 3 of which are electric, control the sails.

There are 2 Volvo Penta inboards and 2 x 330W solar panels.

Work summary New Zealand 2021:

On completion of the Trans Atlantic / Trans Pacific voyage.

1. April Lift out and full hull antifoul and inspection
2. Both sail drives serviced by Volvo - new o rings and seals
3. New galley fascia to all cupboards and drawers
4. As new headsail
5. Water maker service
6. Engine service
7. New engine start batteries x2
8. Two new solar panels (330 watts each) total 660 watts
9. New custom solar panel frame built

Disclaimer

Our company offers the details of this vessel in good faith but cannot guarantee or warrant the accuracy of this information nor warrant the condition of the vessel. A buyer should instruct his agents and/or surveyors to investigate such details buyer desires validated. This vessel is offered subject to prior sale, price change or withdrawal without notice.

-
10. New 42 inch HD LED Smart TV
 11. Rig check/inspection
 12. New cooling plate to main fridge/freezer
 13. Regas on both compressors
 14. Sandblast and marine paint to davits, twin steering wheels and bowsprit
 15. New three blade folding propellor from Volvo to port engine
 16. All new plumbing to master cabin heads and holding tank
 17. New skin fittings / sea cocks - starboard side
 18. Bow roller serviced
 19. Anchor windless serviced - Lewmar 1500 watts - stripped, serviced and rebuilt

PLEASE NOTE: "Aroha" is fully VAT paid in Europe, but she is currently in New Zealand and is NOT imported or tax paid for either New Zealand or Australia.

Please contact us for further details on this.

Features

Designer	Christopher Bureau
Builder	Catana
Water (Potable) Capacity (l)	800
Hull Construction Material	GRP
Hull Type	Catamaran
Deck Construction Material	GRP
Country Origin	France
Length (feet)	47
Length (m)	14.3
Length Waterline (m)	14.3
Beam/Width (m)	7.7
Draft (m)	0.8-2m
Number of Helms	2
Displacement	13000
Colour	White
Engine Notes	Serviced July 2021.
Number Of Engines	2
Engine Standard	

Disclaimer

Our company offers the details of this vessel in good faith but cannot guarantee or warrant the accuracy of this information nor warrant the condition of the vessel. A buyer should instruct his agents and/or surveyors to investigate such details buyer desires validated. This vessel is offered subject to prior sale, price change or withdrawal without notice.

	Volvo Penta MD22
Horse Power (hp)	55
Drive Type	Sailldrive S120
Generator	Northern Lights
Number of Batteries	6 x 130Ah
Fuel Type	Diesel
Number of Fuel Tanks	1
Fuel Tank Capacity (L)	400
Propeller	2 folding Volvo
Accommodation Notes	Owners version - 3 double cabins. 2 have Double + single berth. Washing machine.
Number of Berths	8
Number of Showers	3
Shower Type	2 interior, 1 exterior
Number of Toilets	2
Toilet Type	Jabsco manual
Air Conditioning	Nil
Number of TVs	1 x LCD HD
Holding Tank (L)	2 tanks
Galley Notes	Large workbench
Stove	Eno
Refrigeration	2. 400L + 100L.
Number of Freezers	2
Number of Sinks	2
Entertainment and Appliances Notes	Fusion stereo + 100w amp + 6 speakers
Anchor / Winch	Lewmar
Bilge Pump	6 auto + 2 manual
Deck Gear	8 winches. 3 x electric, 2 x speed.
Mast/Rigging	Aluminium mast with S/ Steel rigging.
Sail Inventory	1 Main. 2 Headsail. Spinnaker (in a sock) and a screecher (on a continuous line furler).
Electrics	2 x AIS. Solar panels - 660w - in custom frame.
Electronics Navigation	B & G, Raymarine. 2 Chartplotters - Axiom and Raymarine.
Dinghy	3.6m Takacat + 15hp Yamaha 2 stroke outboard on davits.
Safety Gear	EPIRB, Flares.
Covers	Full bimini
Ground Tackle	80m x 10mm chain
Watermaker / De-Sal	12v Spectra - 60L/ hour

Disclaimer

Our company offers the details of this vessel in good faith but cannot guarantee or warrant the accuracy of this information nor warrant the condition of the vessel. A buyer should instruct his agents and/or surveyors to investigate such details buyer desires validated. This vessel is offered subject to prior sale, price change or withdrawal without notice.

GPS	3
Number of Fish Finders	1
Has Navigation Lights	2 sets
Radio	iCom UHF + SSB
Number of Life Jackets	6
Vessel Name	AROHA

Engine Details

Engine Make	VolvoPenta
Horse Power	55
Fuel Type	Diesel
Drive Type	10
Propeller	2 folding Volvo

Disclaimer

Our company offers the details of this vessel in good faith but cannot guarantee or warrant the accuracy of this information nor warrant the condition of the vessel. A buyer should instruct his agents and/or surveyors to investigate such details buyer desires validated. This vessel is offered subject to prior sale, price change or withdrawal without notice.